

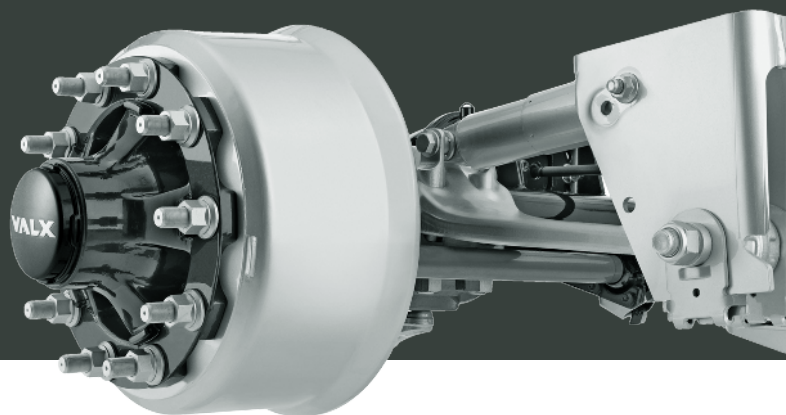


PRODUCT BROCHURE

Valx Axles and Landing Legs

VALX DRUM

420/360/300



Introduction

We provide two drum axles VALX DRUM 420 and VALX DRUM 360, with specially developed VDL Weweler air suspensions. Catering to different market needs, a new type of DRUM 300 was firstly introduced at IAA 2022.

Main Features



Beam

Non-welded structure based on a one-piece, extremely strong seamless, and cold-drawn beam design

Hub

Highly accurate CNC machining and even pressure distribution across the bearing cups

Seal

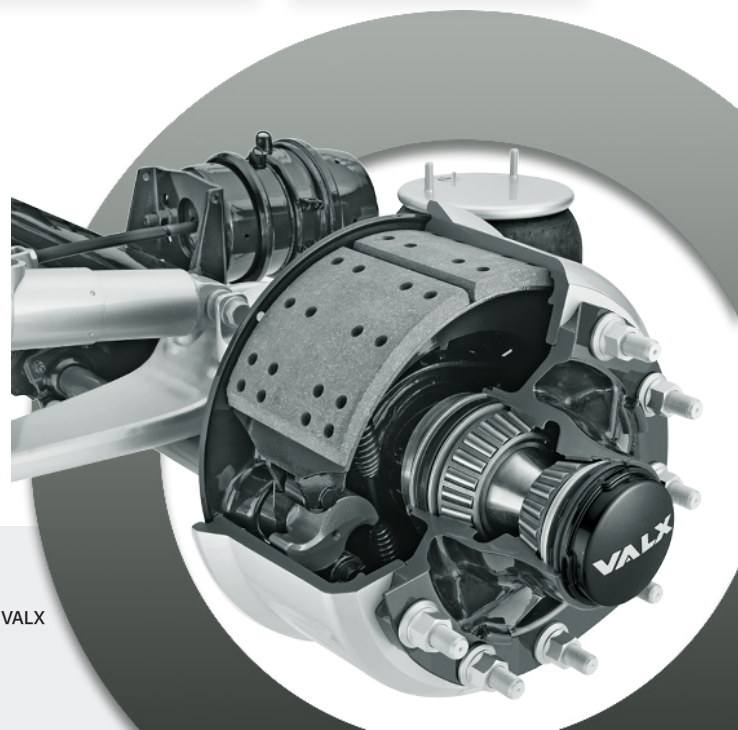
Multi-lip seals made of high-temperature resistant, long-life HNBR rubber and spring-loaded primary lip seals for dirt and moisture exclusion

Bearings

Based on the solutions of two single-row pre-set tapered roller bearings with high capacity and maximized life

Technical specifications

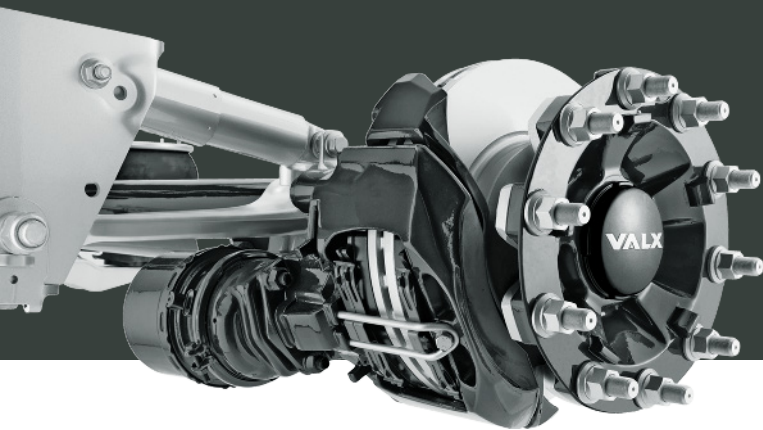
VALX AXLES	DRUM 420	DRUM 360	DRUM 300
Axle load	9000 kg	13000 Kg	9000 kg
Wheel size	22.5"	22.5"	19.5"
Axle beam	1 piece- ø 146 x 10 mm	1 piece- ø 146 x 15 mm	1 piece- ø 146 x 13 mm
Hub offset	0 mm	0 mm	0 mm
Wheel bolts and dimensions	10 – M22 x 1.5mm	10 – M22 x 1.5mm	8 – M22 x 1.5mm
Wheel bolt circle	335 mm	335 mm	275 mm
Brake dimensions	420 x 180 mm	420 x 220 mm	360 x 200 mm
Tyre mounting	Single	Single / Dual	Single
Self-steering axle	Optional	–	–
Hubodometer	Optional	Optional	Optional



VALX B.V.

Address: Everbest 2, 5741 PM, Beek en Donk, The Netherlands

Tel: +31 (0)884058800 | Email: info@valx.eu | Website: www.valx.eu | LinkedIn VALX



VALX DISK

430/370

Introduction

VALX Disk brake axles are available in sizes 430mm and 370mm for your brake solutions. Our disks with ventilated design ensure outstanding brake cooling and improve wear, and thermal behaviour, and even thermal shock. High mechanical efficiency enhances the overall performance. The maintenance-free design warrants lifetime lubrication, which maximizes cost-effectiveness.



Main Features



Beam

Thickened and induction hardened spindle journals, and fully E-coated (KTL) axle beam assembly ensures long-term durability and long-lasting corrosion protection.

Hub

Designed and tested in Europe to adhere to European standards

Seal&Bearings

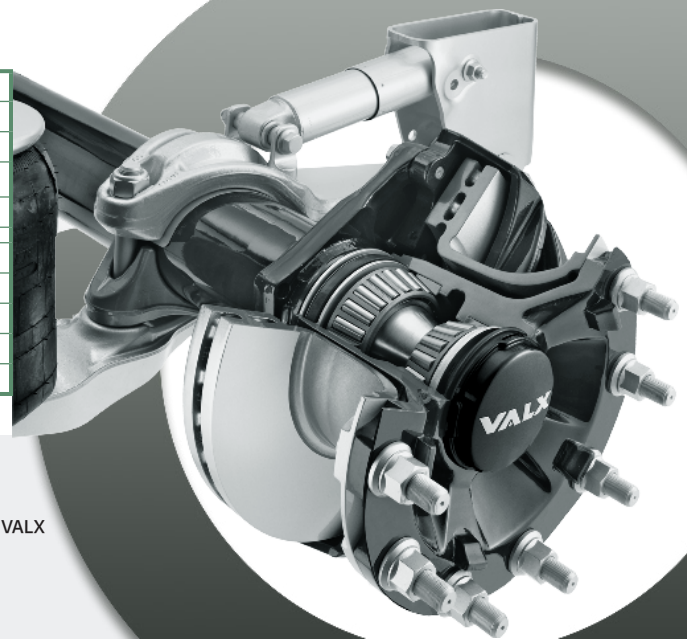
Wide bearing spread minimizes bearing loads and maximizes bearing life, while reducing sensitivity to brake heat transfer. The seal and bearings specially developed are easy to fit and remove.

Calliper

Focusing on the patented single-piston technology, we provide field-replaceable universal WABCO callipers, with standard fitment of PAN 19-1 and PAN 22-1.

Technical specifications

VALX AXLES	DISK 430	DISK 370
Axle load	9000 kg	9000 kg
Wheel size	22.5"	19.5" / 22.5"
Axle beam	1 piece- ø 146 mm	1 piece- ø 146 mm
Hub offset	120 mm	120 mm
Wheel bolt circle	335 mm	335 mm
Brake dimensions	430 mm	370 mm
Tyre mounting	Single	Single
Self-steering axle	Optional	-
Hubodometer	Optional	Optional

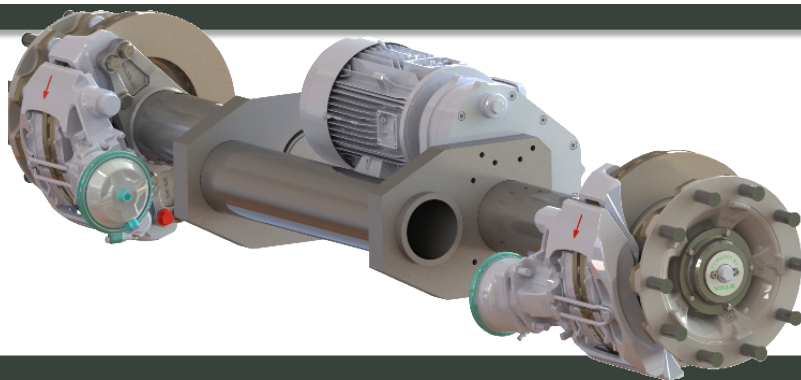


VALX B.V.

Address: Everbest 2, 5741 PM, Beek en Donk, The Netherlands

Tel: +31 (0)884058800 | Email: info@valx.eu | Website: www.valx.eu | LinkedIn VALX

VALX E2!HD ENERGY AXLE



Introduction

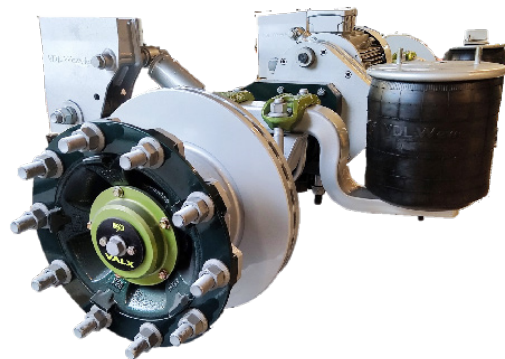
Valx provides ideal solutions for every trailer used for cooling (or heating) with this innovative energy axle across Europe. As one of the most important components in the 100% electric refrigerated trailer, the energy generated by the E2!HD axle is stored in the battery pack and brought to the cool unit. Since 2018, more than 800 trailers have been equipped with energy axles, which contribute a lot to energy conservation and emission reduction. In the IAA 2022, the energy axle is equipped with the new generation of VDL Weweler air suspension-[MBS Omega](#).

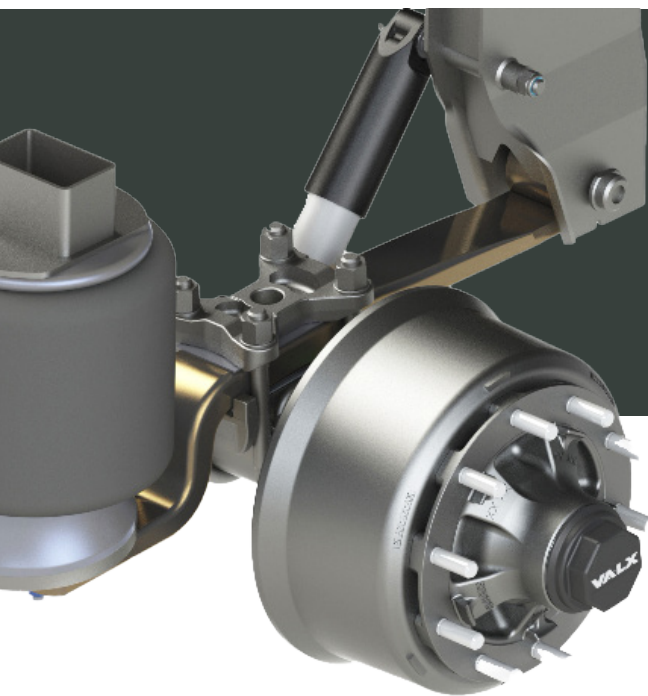
Main Features

- ✓ No Euro 2 diesel engine is needed and no diesel consumption (minimum 30 liter of diesel saved per day)
- ✓ Zero CO₂ Emission with over 43 million kg achieved
- ✓ Silent
- ✓ Less maintenance and less king pin pressure (-400 kg)

Technical specifications

PEAK POWER	14 kW
CONTINUOUS POWER	9 kW
GENERATOR	Air-cooled unit & Intelligent generator software
SUITABILITY	Suitable with every standard truck
AXLE+GENERATOR	230V / 400V / 3 / 50Hz
BATTERY PACK	400V / 3 / 50Hz
GRID POWER SUPPLY	400V / 3 / 50Hz
PAN 22 DISC BRAKE AXLE TRACK WIDTH	Available in 2040mm and 2090mm





M-AXL

■ Introduction

The M-AXL axle is equipped for extreme endurance. The thicker beam and improved S-cam seals are perfect for lifelong off-road usage.

■ Main Features

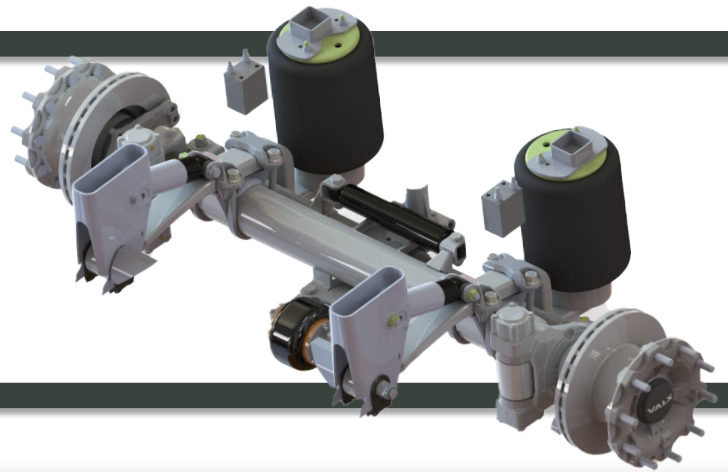
- ✓ HD steel hubcap and steel air suspension pistons
- ✓ HD trailing arms with steel-rubber-steel pivot bushes
- ✓ HD closed hanger brackets with special wear plates
- ✓ Shock absorbers with a wide range of operating temperatures
- ✓ The casted bracing brackets ensure that the side forces are guided into the chassis through the center of the pivot bolt, preventing an additional bending moment in the hanger brackets
- ✓ Viton[®] seals for high working temperatures and optimized internals for low ambient temperatures
- ✓ No need for catch straps or rapid venting, with the shock absorber functioning as the stroke limiter

■ Technical specifications

Air springs	Long stroke (for increased axle travel)
	350mm
Air springs offset	30/50/95mm
Spring U-bolt	M24 (cold-formed, high strength)



Self Steering Axle



Introduction

Available both in drum and disk brakes, the VALX self steering axle has the same outstanding durability as the well proven rigid axle. It is designed, built, and tested in Europe to accept European standards.

Main Features

- ✓ Reduce wear of trailer components, like the tyre wear and reduce fuel consumption
- ✓ Improve road behaviour and increase manoeuvrability
- ✓ Low maintenance and long-lasting kingpin bearings
- ✓ Heavy duty locking mechanism



VALX B.V.
Address: Everbest 2, 5741 PM, Beek en Donk, The Netherlands

ITel: +31 (0)884058800 | Email: info@valx.eu Website: www.valx.eu LinkedIn VALX



VALX Landing Leg

Robust design with industry-leading static load and lifting capacity

Main Features

- ✓ Stamped 10-hole (dual) back plate for multiple mounting options
- ✓ Compact gearbox with low installation depth and high-strength forged steel gearing
- ✓ Premium E-coating and powder coating for outstanding corrosion protection
- ✓ Smooth and easy operation
- ✓ Three-year warranty
- ✓ Three-year maintenance-free design with dedicated premium grease



Technical specifications

Static load capacity	60 Tonnes (Standards) / 80 Tonnes (Heavy Duty)
Lifting capacity	25 Tonnes
Low gear ratio	1mm per turn
High gear ratio	12mm per turn
Competitive weight	Starting from 89 kg

VALX B.V.

Address: Everbest 2, 5741 PM, Beek en Donk, The Netherlands

Tel: +31 (0)884058800 Email: info@valx.eu Website: www.valx.eu LinkedIn VALX



VALX eLEG

The electric landing leg to save time and money

Main Features

- ✓ Robust and compact solid aluminium gearbox casing
- ✓ Low maintenance gearbox with low temperature premium (lubricant rated from -20°C to +50°C)
- ✓ Powerful electric drive with two-speed gearing and simple push-button operation
- ✓ Neutral gear position to allow backup manual operation
- ✓ Self-sufficient maintenance free battery included with built-in battery charger
- ✓ Available in different lengths and foot types
- ✓ Fully weather & waterproof

Specifications

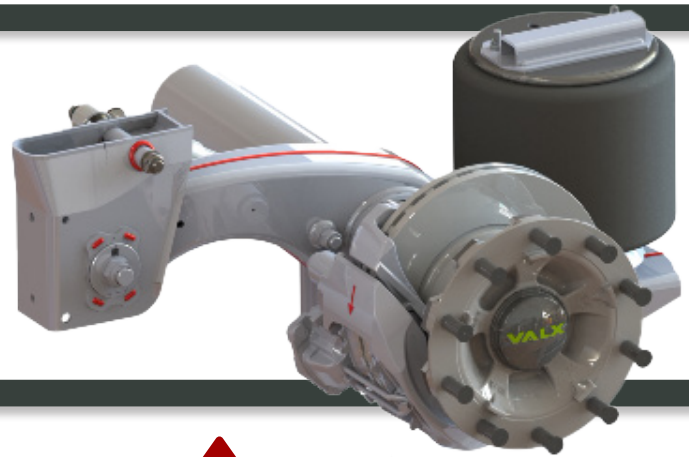
Lift capacity	25 Tonnes
Static load	60 Tonnes
Leg speed	34cm/min (13.5"/min) on high gear
eLEG kit weight	135-145 kg (depending on length and foot configuration)
Voltage	24 V
Voltage input	9-30 V
Charge output	14 V / 2 Amp
Battery voltage	12 V

Gear Settings

High gear	to get the legs to the ground fast or to return them to the neutral position
Low gear	lift or lower a trailer once the legs are on the ground
Neutral position	manually wind the leg



VI Air Suspension



Coming Soon

■ Main Features

- ✓ Fabricated design and made in-house at Fuwa
- ✓ Proven pivot bush configuration
- ✓ Excellent strength-to-weight ratio
- ✓ Low component count and easy maintenance
- ✓ A-brand suppliers for shock absorbers and air springs
- ✓ Air spring with an internal bump is required
- ✓ No offset plate is needed for standard applications, with a strong axle-air suspension connection
- ✓ Side mounted shock absorbers for easy access and works as max stroke limiter
- ✓ Axle alignment integrated into the hanger bracket




■ Specifications

Weight	Estimated 100 kg
Air suspension	9 / 10 Tonnes
Axle beam	Applicable on ø 146 mm
Air spring	ø 300 mm / ø 350 mm
Trailing arm	200-615(a wide range of ride heights covered)
Air springs offset	Multiple possibilities
Bolt on axle lift	Optional
L1/L2	L1: 500mm L2: 340/380mm



Contact information

Valx B.V.

 Everbest 2
5741 PM
Beek en Donk
The Netherlands

 +31 (0)884058800

 info@valx.eu

 www.valx.eu/en

 [Linkedin VALX](#)